

# SOFREL CNP

## Water level and pressure sensors



SOFREL's range of sensors meets the most demanding of needs when it comes to water levels and pressure, and purification. Both robust and precise, they are specially designed to work best with facilities equipped with SOFREL Remote Terminal Units.

SOFREL CNP's range includes three models:

- ▶ CNP<sub>i</sub>: underwater sensor for measuring drinking water levels in reservoirs, boreholes, etc
- ▶ CNP<sub>r</sub>: connectable sensor for measuring pressure in piping.
- ▶ CNP<sub>a</sub>: underwater sensor for specialised purification or charged water for measuring level in lift station tanks or retention basins.

Protected against overvoltage, these sensors also offer excellent long term stability in measurements. They are therefore a reliable, affordable solution perfectly adapted to Telemetry and Scada.



# SOFREL CNP: sensors adapted to every type of measurement



**SOFREL CNP:** piezoresistive underwater pressure sensor with stainless steel membrane for purified water.

► **Features**

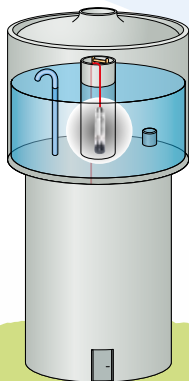
- 4-20 mA output 2 wires
- 7 to 30 VDC power supply
- Temperature from -10 °C to +70 °C
- EPR cable with capillary tube, protected against water infiltration
- Precision < +/-0,35 % FSO according to IEC 60770
- Integrated overvoltage protection
- Low consumption for SOFREL Remote Terminal Units
- ACS certificate

► **Standard models**

- 6 m measure with 9 m cable
- 10 m measure with 13 m cable

► **Tailored model on request**

- 1 m to 250 m with cable at requested length



**SOFREL CNP-R:** piezoresistive pressure sensor for DIN 3852 gas 1/4 inch link with high-quality stainless steel membrane for purified water

► **Features**

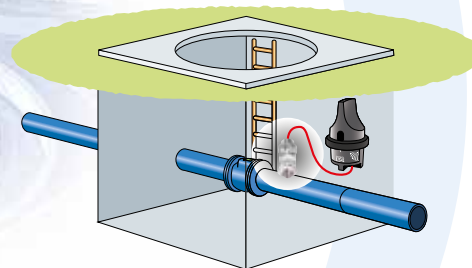
- 4-20 mA output 2 wires
- 7 to 30 VDC power supply
- Temperature from -25 °C to +85 °C
- PVC cable with capillary tube, protected against water infiltration (IP68)
- Precision < +/-0,35 % FSO according to IEC 60770
- Integrated over-voltage protection,
- Very resistant to high pressure (60 bars for the 16 bar model),
- Specialised low consumption model for SOFREL Remote Terminal Units

► **Standard model**

- 16 bar measure with 3 m cable

► **Tailored model on request**

- 0,04 bars to 40 bars with 3 m cable



**SOFREL CNP-A:** submersible pressure sensor with capacitive ceramic membrane, perfect for use on used or charged water.

► **Features**

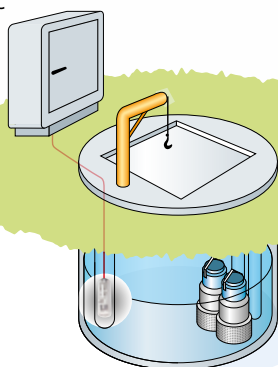
- 4-20 mA output 2 wires
- 9 to 36 VDC power supply
- Temperature from -10 °C to +70 °C
- PUR cable with capillary tube, protected against water infiltration
- Precision < +/-0,35 % FSO according to IEC 60770
- Integrated overvoltage protection
- Specialised model for wastewater applications

► **Standard model**

- 3 m measure with 10 m cable
- 6 m measure with 15 m cable

► **Tailored model on request**

- 0,4 m to 100 m with cable at requested length



**Clamping tool CNP<sub>R</sub> and CNP<sub>A</sub>**

► **Features**

- Stainless material
- Cable diameter 5,5 to 10,5 mm
- Dimension 175 x 55 x 25 mm



**EN 61 326:**  
Electrical equipment for measurement, control and laboratory use



**Sofrel**  
**LACROIX**

2, rue du Plessis - 35770 Vern-sur-Seiche (Rennes) France  
Tel.: +33 (0)2 99 04 89 00 - Fax: +33 (0)2 99 04 89 01  
E-mail: telecontrol@sofrel.com - Web: www.sofrel.com  
SOFREL LS website: www.ls-leak-detection.com