

# SOFREL S500

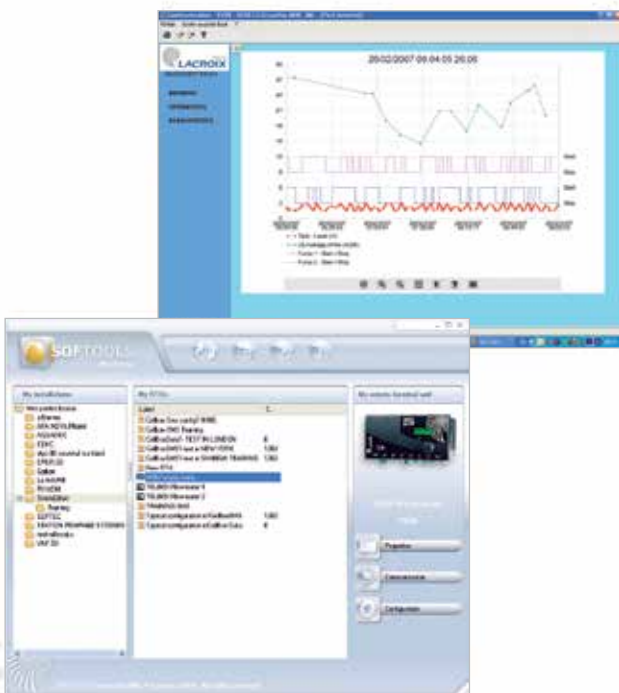
## Modular Remote Terminal Units



The SOFREL S500 range of Remote Terminal Units offers a modular solution that combines performance, ease of implementation and reliability.

S500 telemetry and SCADA remote terminal units make it possible:

- **Optimisation and improvement in technical site management through permanent monitoring of installation operation**
- **Alert sent in the case of any problem occurring on a remote site**
- **Automation of processes and remote access to monitored equipment**



Sofrel  
**LACROIX**

# SOFREL S500: modularity, performance and simplicity of use

## From remote alarming to complete telemetry solution

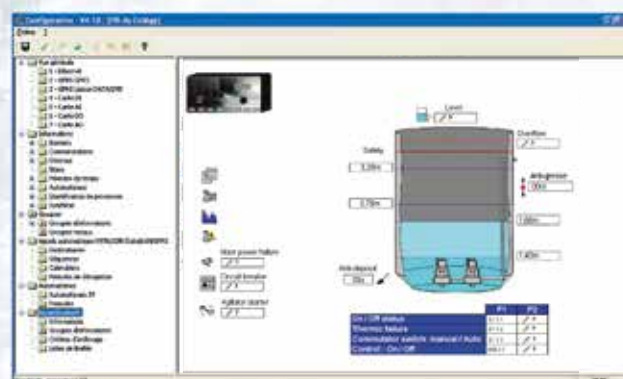
Designed to meet the remote control and management needs of technical installations, the SOFREL S500 range of telemetry and SCADA Remote Terminal Units combines multiple functions: remote alarming, telemetry, remote counting, telecontrol, archiving, balances, process controls, network communication, etc.

Perfectly suited to applications such as drinking water and waste water treatment, heating, ventilation and air-conditioning, public lighting, etc., S500 Remote Terminal Units allow you to interlink, secure and automate isolated or distant sites, and offer users shorter response times while also cutting operating and running costs...



## Easy to install and use

Designed to be operated by agents in the field, S500 Remote Terminal Units are configured via an intuitive, user-friendly graphical interface. This configuration process is even simpler to perform since it uses clear language not requiring any programming skills. It is therefore a question of simply following the icons displayed and entering information via the pre-filled screens in order to quickly set the parameters of an S500.



# SOFREL S500: modularity, performance and simplicity of use

## Multiple user interfaces

In order to provide an optimal response to the operating constraints of distant sites, the S500 Remote Terminal Units offer a wide choice of user interfaces. Whether using the interactive graphical screen integrated in the Remote Terminal Unit, an internet browser or SMS, operation of the S500s is perfectly adapted for any context in which they are used.



## Open and secure communication

Intended to overcome all terrestrial communication constraints, the S500 offers multiple transmission modes. Whether using traditional media (PSTN, GSM, DL, radio, etc.) or more recent methods (ADSL, ethernet, GPRS, etc.), the S500 Remote Terminal Units enable the contract operator to maintain contact with all of their installations in a consistent manner.

The S500s are also able to communicate with other devices: PLCs, controllers, intelligent sensors, as well as with other remote terminal units in order to provide "inter-facilities" process controls.

## SOFREL S500 + SG1000: secure solution for GPRS communication

Installed at the core of the telemetry and SCADA system on the central station, the SOFREL SG1000 server provides S500 communication and security across a public GPRS network.



# SOFREL S500: modularity, performance and simplicity of use

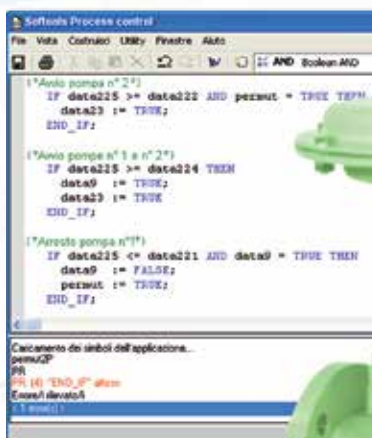
## Alarm reporting and management

Designed to alert the right contact, at any time and in any place, the S500 remote terminal units' alarm reporting function makes use of emails or SMS messages in particular. The standby-duty agent can thus be informed of the problem, establish an initial diagnosis remotely and, if necessary, intervene on the installation (telecontrol, modification of setpoints, etc.).

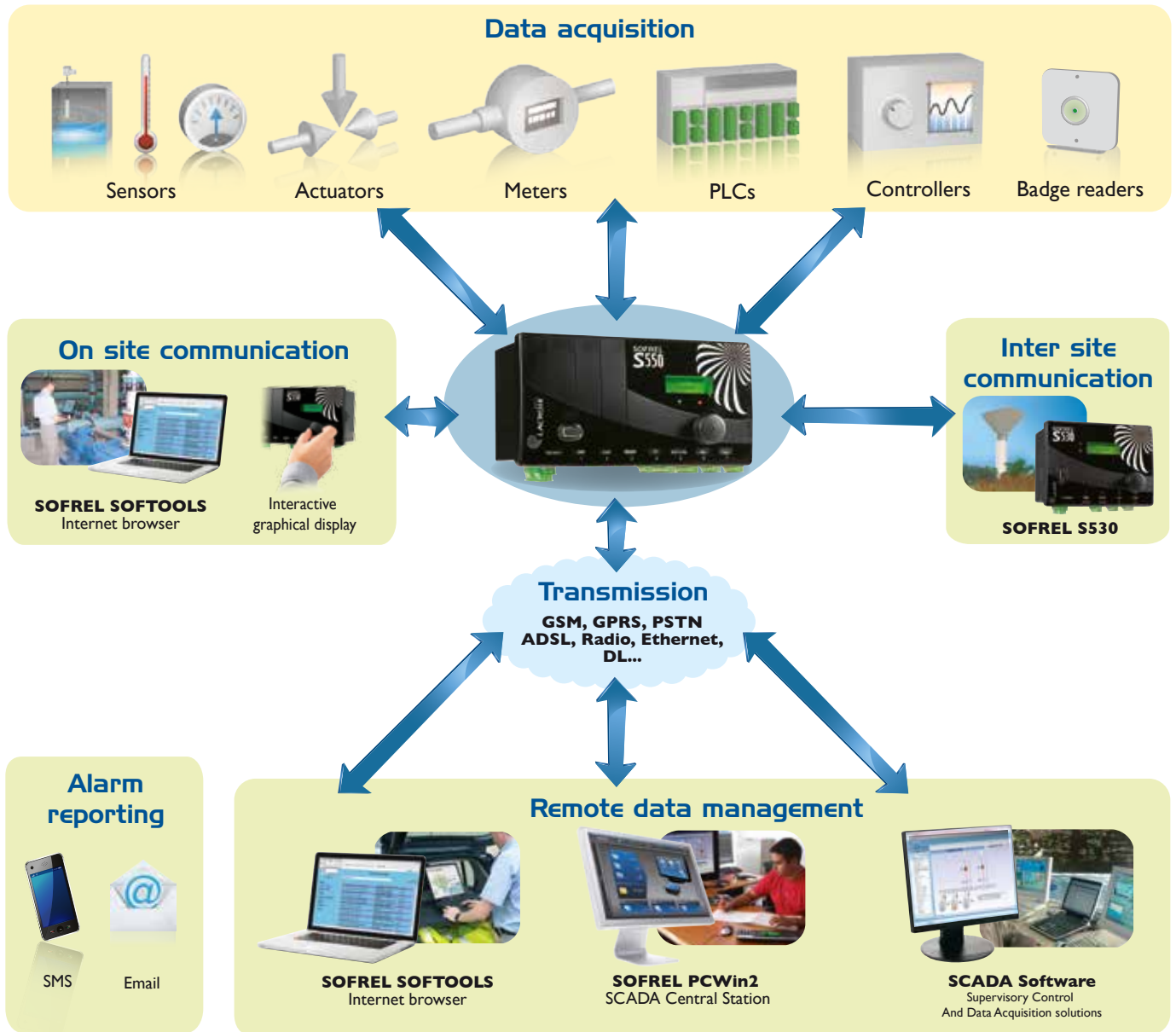


## Process control and calculation

In addition to their telemetry and SCADA functions, S500 Remote Terminal Units offer various process control options. Whether simple functions such as threshold controls, more complex ones such as device operating permutations, or process control programming in standard languages (ST-Standard IEC 1131-3), the S500 range enables the contract operator to find a solution to manage all of their installations



# At the core of your installations



S500 Remote Terminal Units acquire, process and transmit information from the structures in which they are installed. Thanks to their balances, archiving and process control functions, the remote terminal units offer complete management of the controlled installations. Their multiple communication capacities enable the recuperation of information to a SCADA. central station, communication between distant sites, interlinking with other devices, and direct dialogue with operating agents.

## Concrete advantages

S500 Remote Terminal Units are distinguished by their broad range of functions, their ease of implementation, and their simplicity of use.

The process control module and the IP network communication functions enable very extensive customisation options for the applications, should this be desired. Complementary, modular and upgradeable, the remote terminal units in the S500 range provide solutions which are adaptable to any telemetry and SCADA project.

# SOFREL S500: a modular and expandable RTU



S510  
Simplified Remote Terminal Unit



S530  
Compact Remote Terminal Unit



S550  
Expandable Remote Terminal Unit



16 DI



6 DO



8 AI-20  
Expansion modules



6 AI-T°

The modularity of the S500 range provides solutions suited to any size of installation and any functional need.

## Innovation and reliability

LACROIX Sofrel invests heavily in R&D in order to offer products which are innovative, robust and easy to use. Since telemetry and SCADA require perfect reliability and permanent availability, the electronics in S500 Remote Terminal Units offer a high level of EMC (electromagnetic compatibility), able to withstand the most difficult environments.

## Main features

The Remote Terminal Units in the S500 range have the same functions and share the same communication, input-output and power-supply boards. Only the CPU board differs from one model to another.

Basic characteristics	S550	S530	S510
Number of board slots	7	4	4
Interactive graphical display	✓	✓	
Terminal port	✓	✓	✓
Communication boards	1 to 7	1 to 2	1 to 2
PSTN	✓	✓	✓
GSM/GPRS	✓	✓	✓
DL/HF for private lines (LP) or external radio unit	✓	✓	✓
RS485-A + RD-RTU-2 for radio HF 869 without licence (500 mW)	✓	✓	✓
Ethernet 10 BT	✓	✓	✓
RS 232, RS 485, RS 485 isolated	✓	✓	✓
Dallas for badge readers (access control)	✓	✓	✓
Input/Output boards	Up to 7	Up to 4	Up to 4
8 DI (8 Digital Inputs)	✓	✓	✓
4 DO+WDG (4 Digital Outputs + Watchdog)	✓	✓	✓
2 DO (2 Digital Outputs)	✓	✓	✓
4 AI (4 Multi-standard Analog Inputs)	✓	✓	✓
2 AI (2 4-20 mA Analog Inputs)	✓	✓	✓
4 AO (4 Analog Outputs)	✓	✓	✓
Input/Output expansion modules	Up to 20		
16 DI (16 Digital Inputs)	✓		
6 DO (6 Digital Outputs)	✓		
8 AI-20 (8 4-20 mA Analog Inputs)	✓		
6 AI-T° (6 Temperature Analog Inputs, Pt 100, Pt 1000, Ni 1000)	✓		



2, rue du Plessis - 35770 Vern-sur-Seiche (Rennes) France  
 Tel.: +33 (0)2 99 04 89 00 - Fax: +33 (0)2 99 04 89 01  
 E-mail: telecontrol@sofrel.com - Web: www.sofrel.com  
 Site web SOFREL LS: www.sectorisation.com