



## SOFREL S4W RANGE



TELEMETRY AND SCADA 4.0 REMOTE TERMINAL UNITS  
FOR CONNECTED AND CYBERSECURED WATER NETWORKS

# Connected and cybersecure water networks management

**SOFREL S4W Remote Terminal Units bring telemetry into the 4.0 era.**

Based on IP (Internet Protocol) technologies, S4W integrates communication modems and relies on specific ready-to-use water features to monitor your sites 24/7, alert you in case of anomaly, manage and automate your technical facilities.

## SECURITY

BADGE  
READER

IP CAMERA

## SCADA & AUTOMATION

VALVES

MOTORS

PLCS

METERS

SENSORS

ANALYSERS

011101010110110  
011010101010101  
010110101011101  
011010101010101



## INTER-SITE M2M



- **Monitoring/control** of remote facilities



## SUPERVISION & MONITORING



## AUTOMATIC REDUNDANCY OF COMMUNICATION MODES: **2G / 3G / 4G\* & ADSL / XDSL...**

\* Available for Europe, Africa, Middle East, for other geographical areas please contact us



## ON-SITE MOBILE ACCESS



## REMOTE VIEWING



# SOFREL S4W modular architecture and “Water” industry TO **ADAPT** TO ALL TYPES OF OPERATIONS

## PUMPING STATIONS

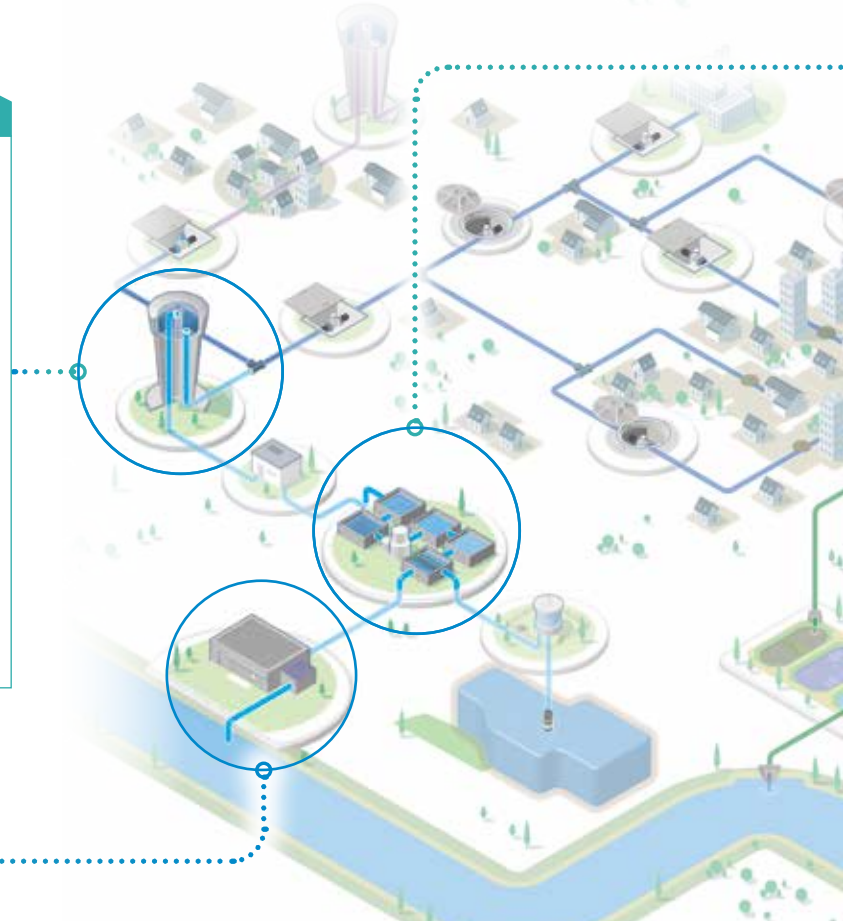
- **Inter-site communication** between stations and water tanks
- **Control of pump flow** and pump performance
- **Computation of volumes** withdrawn from the natural environment
- **Water** physico-chemical characteristics monitoring
- **Access control and management**

## RESERVOIRS

- **Inter-site communication** between water tanks and pumping stations
- **Dynamic refilling** according to need and electricity time-of-use rates
- **Chlorination pump control**
- **Access control and management**
- **Data logging:** levels, flow rates, etc.
- **Management of overflow** and underfill levels

## ON-CALL AND FIELD RESPONSE TEAMS

- **On-site and remote data visualisation**
- **Malfunction immediate alert**



# features

## DRINKING WATER TREATMENT PLANTS

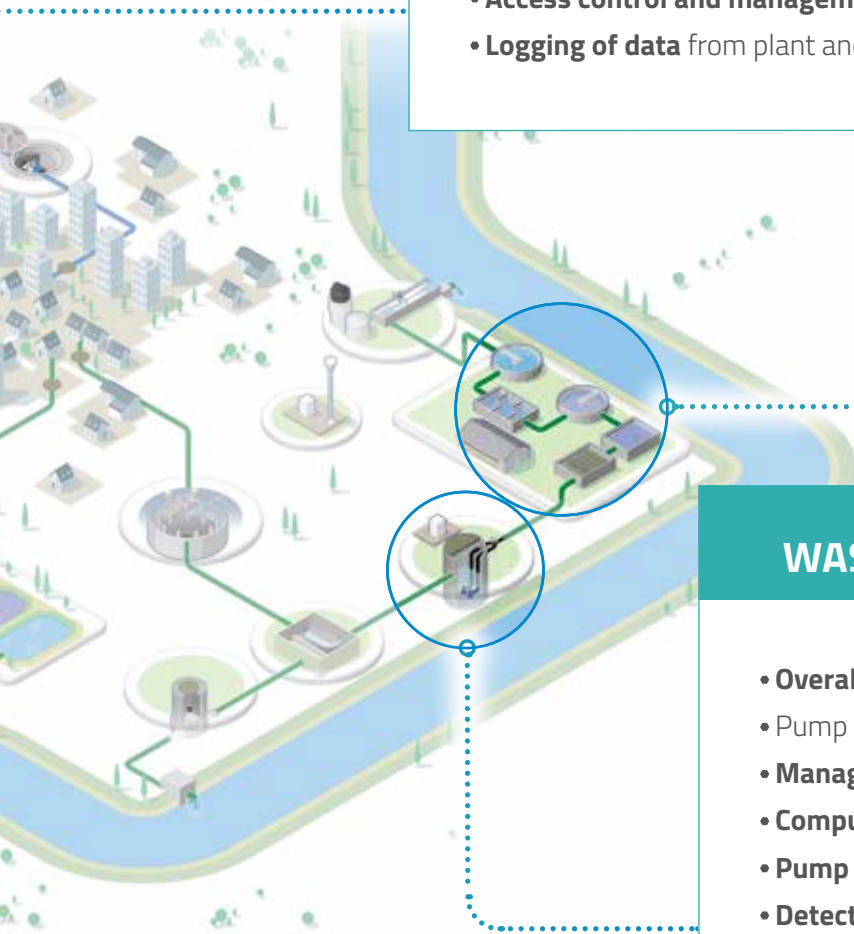
- **Management and monitoring** of the water treatment process
- Pump and actuator operation **optimisation**
- **Monitoring** of treatment product levels
- **Access control and management**
- **Logging of data** from plant and process operations

## WASTE WATER TREATMENT PLANTS

- **Management and monitoring** of the purification process
- Pump and actuator operation **optimisation**
- **Logging of data** required for operation and regulatory self-monitoring reports
- **Control and management** of access to structures

## WASTEWATER LIFT STATIONS

- **Overall management of pumping** according to system load
- Pump operation **optimisation and automation**
- **Management of the grease ring and tide mark build-up**
- **Computation of volumes and flows pumped** (hours/days)
- **Pump operating reports** for preventive maintenance purposes
- **Detection of clear water infiltration**
- **Energy monitoring and optimisation**
- **Data logging** required for operation and self-monitoring reports



# SOFREL S4W a Remote Terminal Units range and software suite TO SUPPORT THE **SECURITY** AND **PERFORMANCE** OF WATER SYSTEMS

In addition to **compact, connected and robust** industrial equipment, we propose a full cybersecure **remote management solution**.

Its **simplicity of implementation** and use via **graphics-based, user-friendly software** make the daily life of users as easy as possible.

*SMART DATA*  
*SMART WATER*

## 100% AGILE OPERATION

- **“Plug and play”** touchscreen display units
- **Integrated web server** (Synoptics, graphs and data accessible on PC, smartphone and tablet)
- **Centralised** network management
- **Easy interfacing with SCADA systems**
- **Real-time viewing of information, statuses, etc.**

*IIoT*

*M2M*



## EASY SET-UP

- **Equipment configurable** via a graphic user interface
- **Ready-to-use** “water” features (alarm reporting, time-stamped archiving, reports, management functions, etc.)
- **Built-in communication modules**
- **Configuration and user** administration software (S4-Manager)

## ROBUSTESSE AND LONGEVITY

- **Full control** of development and manufacture (usine LACROIX France)
- Provides a **high degree of EMC** for surge protection
- **Robust equipment** for installation in harsh environments
- **Regular updates** to ensure telemetry network longevity
- **3-year warranty** including surge cover

# SMART ENVIRONMENT

## HIGH LEVEL OF SECURITY

- **Built-in cybersecurity** (encryption, VPN server, authentication certificates, etc.)
- **Centralised** access management
- **“Watchdog” mode** for switching to a degraded PLC in the event of process anomaly

## RELIABILITY OF COMMUNICATIONS

- **ADSL/4G dual support:** in case of ADSL communication failure, the S4W automatically switches to 4G
- Mobile operator **selection optimisation**
- **Exchanged data volume** and **communication cost control monitoring**
- **Add-ons available** (radio, LP modules)
- **No loss of data:** everything is transmitted to central systems
- **Equipment backed-up by battery** to continue logging and transmitting data in the event of power failure

# SOFREL S4W robust industrial equipment TO SUPPORT YOUR WATER SYSTEMS FOR MANY YEARS



S4-Display touchscreen display unit



2G/3G/4G modem

Up to 4 inputs (AI)

Up to 16 inputs (DI)

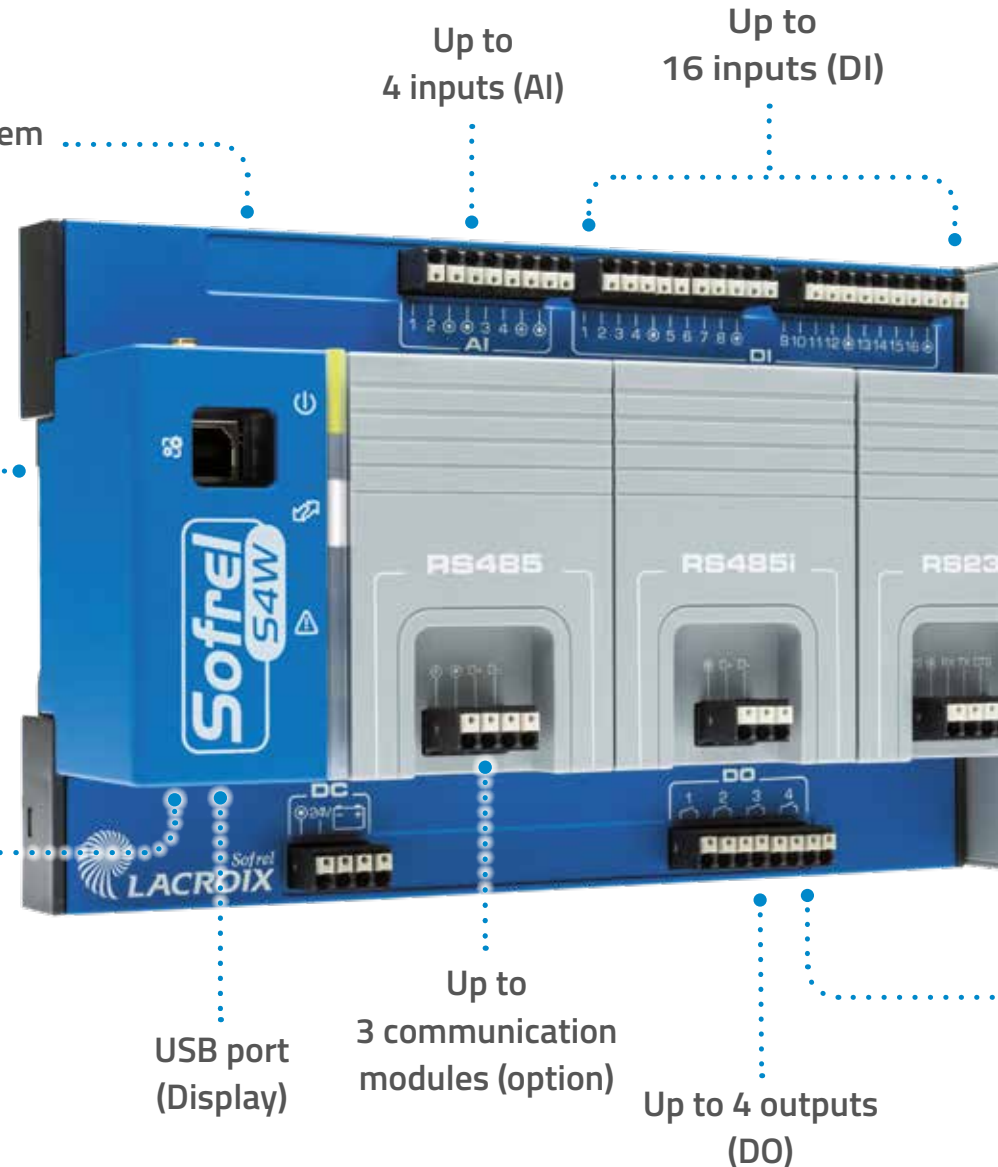
USB terminal

Ethernet Port

USB port (Display)

Up to 3 communication modules (option)

Up to 4 outputs (DO)





# EXTREMELY MODULAR

Up to  
10 I/O extension  
modules



Removable  
spring-loaded  
connectors

EXT bus extension  
modules

**SOFREL S4W Small**  
8DI 2AI 2DO - 500 data points



**SOFREL S4W Medium**  
12DI 2AI 4DO - 1000 data points



**SOFREL S4W Large**  
16DI 4AI 4DO - 1000 data points



**SOFREL S4W Dual**  
8DI - 1000 data points



The S4W offer is distinguished by its **simplicity of use** and speedy installation. S4W is accessible to all thanks to the **graphics-based configuration software** S4W-Tools, its configuration assistant and its pre-configured **“water industry” functions**.

If necessary, expert users can customise the operation of their process even further using the **integrated automation workshop**.

Using equipment and installations is extremely simple thanks to the S4-View software, the **touch display** and **integrated web server**.



## Remote facilities monitoring & telemetry

- Data time-stamped at source
- Calculations & archiving, operating reports, thresholds, conversion tables
- Management of alarms, recipients and alerting sequences
- Permanent facility monitoring
- RTU and peripherals status diagnostics
- Automatic control of actuators and motors
- Inter-site control of remote terminal units and data loggers
- Monitoring and optimisation of electricity usage
- Communication redundancy
- GSM operator selection assistance

# SOFREL S4W easy-to-install, ACCORDING TO TO YOUR

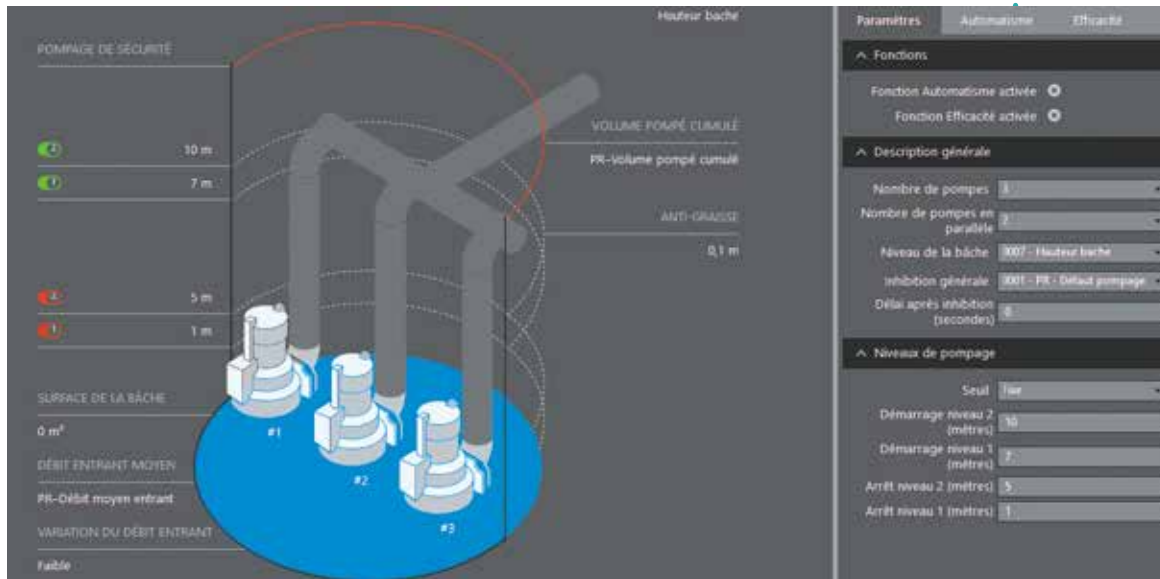
## Built-in HTML5 web server for multi-terminal operation

- Responsive HTML-5 web server
- Data access via smartphone, PC or tablet
- Data viewing
  - Logs and alarm acknowledgements
  - Facility operational log
  - Settings and time period adjustments
  - Graphing of data
- Animated graphic mimic diagrams
  - Editor integrated into S4W
- Archive export (file in CSV format)



easy-to-use equipment

# PERFORMANCE NEEDS



## Graphic configuration and management of lift station

- Graphics-based configuration of the lift station
- Pumping automation and efficiency:
  - Level measurement
  - Pump control, monitoring of starts and running times
  - Sequencing and switching of pumps
  - Anti-grease ring and anti-tide build-up offset
  - Detection of clogged or worn pumps
- Hydraulic efficiency:
  - Computation of current volume, cumulative pumped volume filling times and overflow times
  - Computation of clear water infiltration



## Process-control suite for adaptation to specific use cases

- IEC61131-3-compliant suite built in to S4W
- Languages: ST, FBD, Ladder, Grafcet
- Industry library (specific archiving, badge management, lift station, communication drivers, etc.)
- Simulator, debugger, analyser



# Cybersecurity integrated into the core of the s TO RESPOND TO THE **NEW CHALLENGE**

SOFREL S4W meets the needs of communicating solutions for **permanently connected water networks**.

Understanding the advantages offered by All-IP devices, as well as the risks related to the internet, the teams at LACROIX Sofrel have developed a software ecosystem designed to **keep your telemetry network cybersecure**.

Cybersecurity is a crucial challenge for smart devices. It is essential for maintaining the integrity of the network. Implementing the S4W ecosystem is simple and efficient.



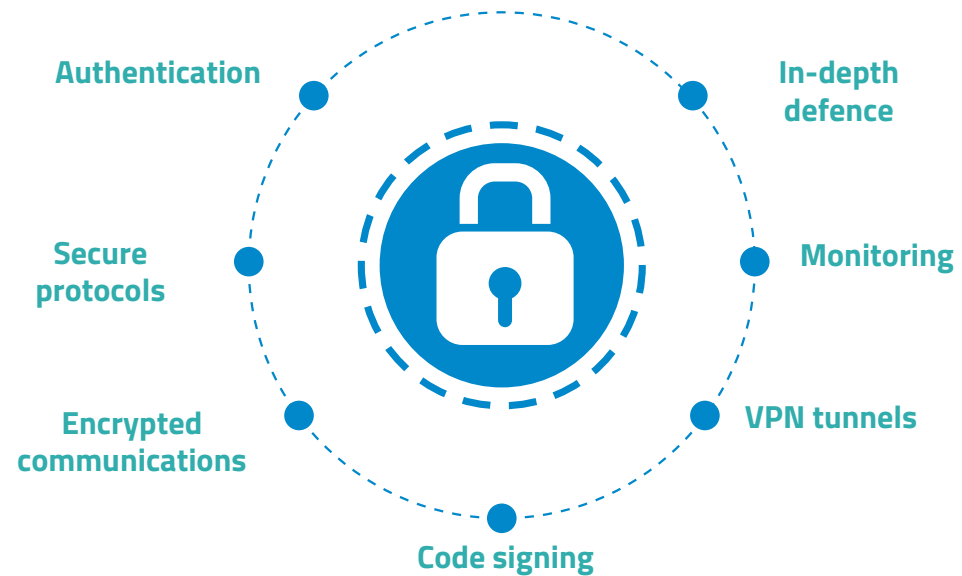
# olution

## ES FACED BY OPERATORS



### ◆ An ideal operating mode for ensuring cybersecurity in water networks

- User authentication
  - Individual accounts (login, password)
- Authentication of connected systems
  - S4W-Tools, S4-View, S4-Manager, Monitoring, SCADA Central Station, S4W Intersites
  - Mutual authentication by electronic certificate
- Data privacy and integrity
  - Encrypted communications
  - Signature of configurations and software
- Traceability
  - Security monitoring (connections, updates, etc.)
  - Safety monitoring (equipment status, system status, etc.)



# From RTU to ecosystem to smoothly safeguard YOUR **TELEMETRY NETWORK**

Apart from Remote Terminal Units, the S4W remote management solution comes with an **ecosystem** designed to **secure and facilitate administration of remote management networks**.

Centralised management of equipment, configurations and access rights provide **time savings and gains in efficiency** for network managers.



## ◆ **SOFREL SG4000**

Creation of a permanent and secure S4W network is interfaced with the central site's applications

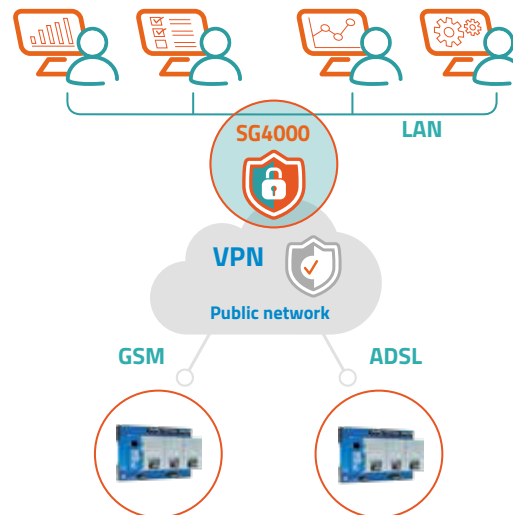
VPN server over public internet to facilitate management of the remote management network

### • S4W VPN network

- Authenticated log-ins
- Encrypted exchanges
- Automatic re-establishment of connections

### • Interface with central site LAN

- RTU VPN/central LAN firewall
- Sector-specific applications: SCADA central station, monitoring, management
- Utilities: messaging service, remote access, etc.

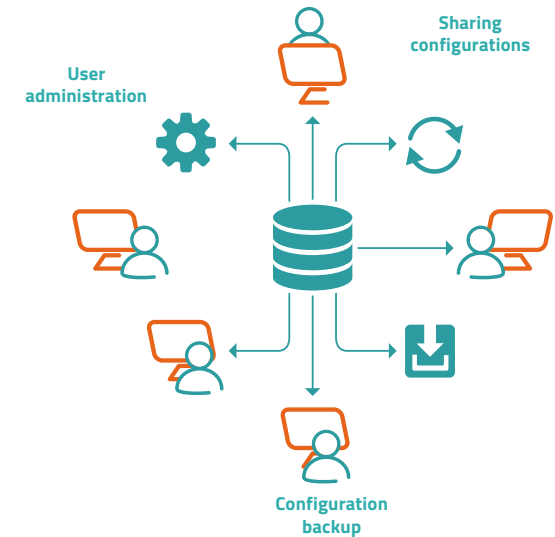


# and manage



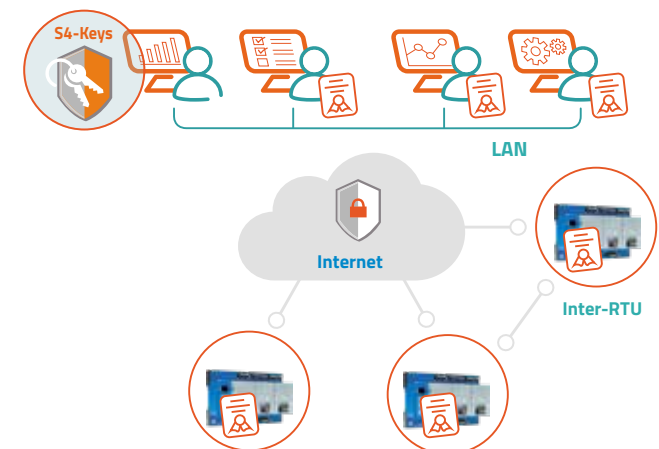
## ◆ **SOFREL S4-Manager** Centralised administration of remote terminal units

- User management
  - Definition of individual accounts: passwords, rights, revocations, etc.
  - Automatic updating of all S4Ws
  - Access badge management
- Saving and sharing of S4W configurations between users

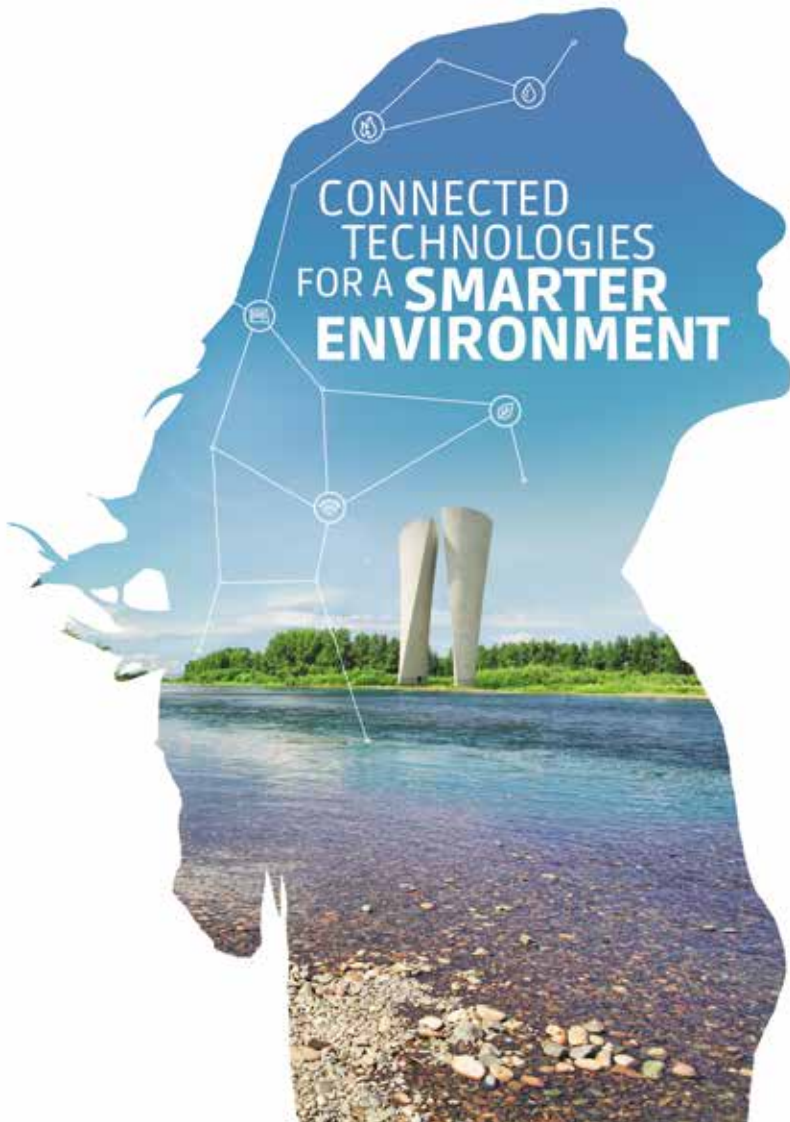


## **SOFREL S4-KEYS** ◆ Creation of certificates for all products in the ecosystem

- Certification authority for all software and RTUs in the telemetry network
- Certificate issuing and management



LACROIX Sofrel is a member of LACROIX Group



2, rue du Plessis  
35770 Vern-sur-Seiche France  
Tel.: +33 (0)2 99 04 89 00  
E-mail: [info@lacroix-sofrel.com](mailto:info@lacroix-sofrel.com)

[www.lacroix-sofrel.com](http://www.lacroix-sofrel.com)